

KONCO COIL OVER FITTING HARDWARE



COIL OVERS

Toperformance Products has a long history of providing quality suspension components to the automotive market in Australia.

The KONCO adjustable ride height coil over products are designed and engineered by Toperformance Products to suit both the KONI shock absorber range, and a wide range of other suspension brands.

The Australian-made hardware is intended for motorsport use, especially with the KONI 8611 double adjustable sport inserts, and is not recommended to be used for normal road use.

KONCO spring seats, lock rings, and separators are machined from toughened aluminium before being anodised. They are designed to suit the King and Eibach motorsport springs of various I.D.s.

The sleeves listed are made from high quality materials and machined to a high degree of accuracy. They are electro-plated to resist corrosion. It is important to measure the outer diameter of the shock absorber or strut and select the sleeve which will fit over the shock absorber or strut. With a wide range of sleeves available for multiple shock absorber and McPherson strut sizes, there is an option for almost all applications.

This catalogue provides information on the KONCO parts including: coil over sleeves, adjustable lower spring seats, lock rings, upper spring seats, and spring separators. The listing details the sleeve internal diameter (I.D.), the spring I.D., the sleeve length, and the part number of the component. There is also extra information regarding each component on the numerical parts list.

The sleeve I.D. is the major factor in spring seat selection. There are spring seats available for all sleeves with at least two spring I.D. options for each sleeve I.D.

All upper spring seats come with a standard 10mm hole for the shock absorber shaft, which can be drilled larger to suit larger shaft sizes if required. The I.D. of the upper spring seat is designed to fit the KONI cellasto progressive bump rubber. Other bump rubbers may also be utilised.

When fitting the sleeve to the body of mono-tube gas hydraulic shock absorbers the sleeve must not be welded. FH1020 is designed to suit the 50mm outer diameter of mono-tube gas hydraulic shock absorbers and is specially machined to fit onto a circlip.

When fitting the sleeve to the body of twin tube and McPherson struts the sleeve must be welded to the tube. When selecting and fitting hardware to the shock absorber or strut, it is vital that the spring choice, fitment of sleeve, and position of seat is such that coil bind at full bump will be impossible.

The KONI Sport and Racing high performance range of shock absorbers, including the 8611 series double adjustable inserts, is the perfect combination when setting up a coil over suspension package. KONI's progressive cellasto bump stops provide a comfortable aftermarket bump stop replacement for most shock absorbers and struts.

Besides shock absorbers and bump stops, Toperformance Products also stocks a range of KONI gland or locking nuts, plus an adjusting 'C' spanner to complement the KONCO fitting hardware.

The 8611 Series KONI double adjustable insert is the perfect addition to a coil over strut conversion.

- Externally double adjustable in bump and rebound damping, giving fine and precise tuning
- Range of lengths from 500mm to 615mm open lengths, 290mm to 390mm body lengths
- To suit strut inside diameters of 44mm and larger
- Made from highest quality materials
- Superb ride quality and big handling improvements
- Ideal for motor sport or track day driver



QUALITY FITTING HARDWARE



LOWER SPRING SEATS
Available in 57, 60, 63 & 65mm ID



THREADED SLEEVE
FH1006
ID 42.2mm / length 75mm



THREADED UNIVERSAL STRUT TUBE
with THREADED GLAND NUT ADAPTOR
FH1026 ID 47mm / OD 57mm / length
365mm. KONI gland nut 7325-01-0071



SPRING SEAT LOCK RINGS



THREADED SLEEVE
FH1020
ID 50mm / length 120mm



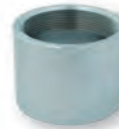
THREADED GLAND NUT ADAPTOR
to weld to strut tube **FH8021**
ID 49.6mm / length 75mm
Use KONI gland nut 7325-01-0071



SPRING SEPARATOR RINGS
Available in 57, 60, 63 & 65mm ID



THREADED SLEEVE
FH1035
ID 55mm / length 120mm



THREADED GLAND NUT ADAPTOR
to weld to strut tube **FH8021**
ID 54mm / length 44mm
Use KONI gland nut 7325-01-0071
*(commonly used to install a KONI double-
adjustable unit into a 54mm OD Commodore strut)*



UPPER SPRING SEAT FLAT
Available in 57, 60, 63 & 65mm ID



THREADED SLEEVE with THREADED
GLAND NUT ADAPTOR **FH1036**
ID 54mm / length 135mm
Use KONI gland nut 7325-01-0071



FH1016
C-Spanners



UPPER SPRING SEAT RAISED
Available in 60 & 63mm ID



THREADED SLEEVE with THREADED
GLAND NUT ADAPTOR **FH1037**
ID 2" / length 170mm
Use KONI gland nut 7325-01-0031



We stock a variety of
KONI gland nuts & bump stops

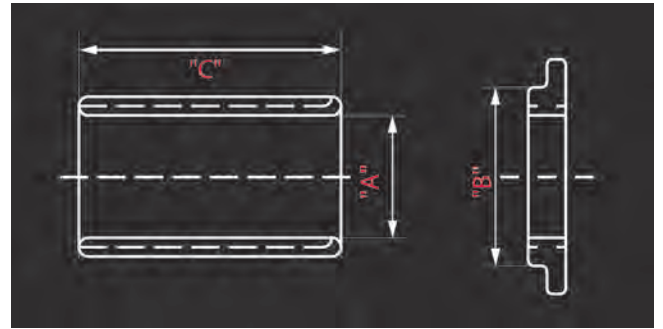
COIL OVER APPLICATIONS

SLEEVE & SPRING SEAT DIMENSIONS

"A" = Threaded sleeve inner diameter (ID)

"B" = Spring inner diameter (ID)

"C" = Threaded sleeve length



DAMPER	SLEEVE ID	SPRING ID	SLEEVE LENGTH	SLEEVE	SPRING SEAT	LOCK RING
	"A"	"B"	"C"	Part Number		
KONI 80 SERIES	41mm	53mm	75mm	FH1009	FH2005	FH3005
		63mm	75mm	FH1009	FH2012	FH3005
	43mm	53mm	75mm	FH1005	FH2005	FH3005
		63mm	75mm	FH1005	FH2012	FH3005
KONI 8040 SERIES	42.2mm	53mm	75mm	FH1006	FH2005	FH3005
		63mm	75mm	FH1006	FH2012	FH3005
STRUTS	45mm	53mm	75mm	FH1010	FH2005	FH3005
		57mm	75mm	FH1010	FH2010	FH3005
		63mm	75mm	FH1010	FH2012	FH3005
		60mm	90mm	FH1014	FH2011	FH3011
STRUTS	48mm	60mm	120mm	FH1015	FH2015	FH3015
		63mm	120mm	FH1015	FH2020	FH3015
		65mm	120mm	FH1015	FH2021	FH3015
KONI 30 & 82 SERIES	50mm	60mm	120mm	FH1020	FH2015	FH3015
		63mm	120mm	FH1020	FH2020	FH3015
		65mm	120mm	FH1020	FH2021	FH3015
STRUTS	2" (50.8mm)	63mm	120mm	FH1025	FH2025	FH3025
		63mm	170mm	FH1037*	FH2025	FH3025
		65mm	120mm	FH1025	FH2026	FH3025
		65mm	170mm	FH1037*	FH2026	FH3025
STRUTS	2.125" (53.975mm)	63mm	120mm	FH1030	FH2030	FH3030
		63mm	135mm	FH1036*	FH2030	FH3030
		63mm	180mm	FH1038*	FH2030	FH3030
		65mm	120mm	FH1030	FH2031	FH3030
		65mm	135mm	FH1036*	FH2031	FH3030
		65mm	180mm	FH1038*	FH2031	FH3030
KONI 82 SERIES	55mm	63mm	120mm	FH1035	FH2030	FH3030
		65mm	120mm	FH1035	FH2031	FH3030
STRUT TUBE	47mm	63mm	365mm	FH1026*	FH2025	FH3025
		65mm	365mm	FH1026*	FH2026	FH3025

* Sleeve has internal thread for gland nut to lock on



	SPRING ID	PART NUMBER	NOTES
TOP SPRING SEAT (STANDARD)	57mm	FH4005	All top spring seats have a 10 mm centre hole. This hole can be enlarged as required to suit the shock absorber in use
	60mm	FH4010	
	63mm	FH4015	
	65mm	FH4020	
TOP SPRING SEAT (RAISED)	60mm	FH4013	For extra clearance between top of the spring seat and the upper mount
	63mm	FH4023	
TENDER SPRING SEPARATORS	57mm	FH5005	These aluminium separators are utilised when installing a tender spring with a main spring
	60mm	FH5010	
	63mm	FH5015	
	65mm	FH5020	
CONVERT SPACER		1529-04-0030	Converting spacer from 57 / 63mm ID
C SPANNER		FH0106	Used to adjust spring seats and lock rings

NUMERICAL PARTS LIST

PART NUMBER	DESCRIPTION
SPANNER	
FH0106	C SPANNER
THREADED SLEEVES	
FH1005	SLEEVE, THR M50x1.5, 43 ID x 75long
FH1006	SLEEVE, THR M50x1.5, 42.2 ID x 75long
FH1009	SLEEVE, THR M50x1.5, 41 ID x 75long
FH1010	SLEEVE, THR M50x1.5, 45 ID x 75long
FH1014	SLEEVE, THR M50x2, 45 ID x 90long
FH1015	SLEEVE, THR M55x2, 48 ID x 120long
FH1020	SLEEVE, THR M55x2, 50 ID x 120long
FH1025	SLEEVE, THR M57x2, 2" ID x 120long
FH1026	STRUT TUBE, THR M57x2, 47ID x 365long, M51x1.5 I/T
FH1030	SLEEVE, THR M60x2, 54 ID x 120long
FH1031	SLEEVE, THR M60x2, 52 ID x 120long
FH1035	SLEEVE, THR M60x2, 55 ID x 120long
FH1036	SLEEVE, THR M60x2 OD x 135long, M51x1.5 INT THR
FH1037	SLEEVE, THR M57x2 OD x 170long, M48x1.5 INT THR
FH1038	SLEEVE, THR M60x2 OD x 180long, M51x1.5 INT THR
LOWER SPRING SEATS	
FH2005	LOWER SEAT, M50x1.5 ID THR, SUIT 53 ID SPRING
FH2010	LOWER SEAT, M50x1.5 ID THR, SUIT 57 ID SPRING
FH2011	LOWER SEAT, M50x2 ID THR, SUIT 60 ID SPRING
FH2012	LOWER SEAT, M50x1.5 ID THR, SUIT 63 ID SPRING
FH2015	LOWER SEAT, M55x2 ID THR, SUIT 60 ID SPRING
FH2020	LOWER SEAT, M55x2 ID THR, SUIT 63 ID SPRING
FH2021	LOWER SEAT, M55x2 ID THR, SUIT 65 ID SPRING
FH2025	LOWER SEAT, M57x2 ID THR, SUIT 63 ID SPRING
FH2026	LOWER SEAT, M57x2 ID THR, SUIT 65 ID SPRING
FH2030	LOWER SEAT, M60x2 ID THR, SUIT 63 ID SPRING
FH2031	LOWER SEAT, M60x2 ID THR, SUIT 65 ID SPRING

PART NUMBER	DESCRIPTION
LOCK RINGS	
FH3005	LOCK RING, M50x1.5 ID THR
FH3011	LOCK RING, M50x2.0 ID THR
FH3015	LOCK RING, M55x2.0 ID THR
FH3025	LOCK RING, M57x2.0 ID THR
FH3030	LOCK RING, M60x2.0 ID THR
UPPER SPRING SEATS	
FH4005	UPPER SEAT, SUIT 57 ID SPRING
FH4010	UPPER SEAT, SUIT 60 ID SPRING
FH4013	RAISED UPPER SEAT, SUIT 60 ID SPRING
FH4015	UPPER SEAT, SUIT 63 ID SPRING
FH4020	UPPER SEAT, SUIT 65 ID SPRING
FH4023	RAISED UPPER SEAT, SUIT 63 ID SPRING
SPRING SEPARATORS	
FH5005	SEPARATOR, SUIT 57 ID SPRING
FH5010	SEPARATOR, SUIT 60 ID SPRING
FH5015	SEPARATOR, SUIT 63 ID SPRING
FH5020	SEPARATOR, SUIT 65 ID SPRING
WELD-ON THREAD STRUT TOPS	
FH8010	WELD THREAD TOP, 39.8 ID, M48x1.5 INT THR, 40long
FH8011	WELD THREAD TOP, 46.6 ID, M48x1.5 INT THR, 75long
FH8012	WELD THREAD TOP, 42 ID, M48x1.5 INT THR, 29long
FH8021	WELD THREAD TOP, 49.6 ID, M51x1.5 INT THR, 75long
FH8022	WELD THREAD TOP, 54 ID, M51x1.5 INT THR, 44long
KONI GLAND / LOCK NUT	
7325-01-0031	KONI GLAND / LOCK NUT, THR 48x1.5
7325-01-0071	KONI GLAND / LOCK NUT, THR 51x1.5



Toperformance Products is the sole distributor of KONCO fitting hardware, proudly made in Australia.



Toperformance Products is the sole authorised Australian importer of KONI shock absorbers.



Toperformance Products is a proud distributor of Eibach springs. We can supply Eibach Motorsport Springs in a range of different lengths, IDs and spring rates.

Toperformance
Products

Office: 327 Ferntree Gully Rd,
Mount Waverley VIC 3149

Warehouse: 14 - 16 Edison Road,
Dandenong South VIC 3175

Phone: 03 8687 1785

Email: tooper@toperformance.com.au

Web: toperformance.com.au

